

# NEWS

NO. 0198 Rev.  
OCTOBER, 8, 2014

Dear Valued 555 Customers:

**SANKEI INDUSTRY CO., LTD.**  
305 Takano, Ritto, Shiga, 520-3045, JAPAN  
E-mail : [info@sankei-555.co.jp](mailto:info@sankei-555.co.jp)

## New Products

Catalogue page	555 NO.	CAR NAME	MODEL	YEAR	POSITION	/CARTON	START (DELIVERY)
36	<b>SE-3391</b>	HIJET	S201	07-	OUT R/L	70pcs	END OF JANUARY
48	<b>SR-T720</b>	AQUA	NHP10	13-	R/L	50pcs	END OF JANUARY
159	<b>SP-1855</b>	B2200	UN	02-	LHD	25pcs	END OF JANUARY

Note 1: New items are not listed on the back "555" catalogues (~Vol. 15).

Note 2: START (DELIVERY) indicates available date.

Please refer to "Additional Applications", "Product Information" in the Following pages.

**THE BEST QUALITY PARTS  
FROM THE MOST ADVANCED MFG. FACILITIES**

*Tie Rod End. Side Rod Ass'y. Ball Joint. Idler Arm.  
Pitman Arm. Center Link. Drag Link. Inner Arm Shaft.*



ISO9001

## Additional Applications

Catalogue page	555 NO.	O. E. M. NO.	CAR NAME	MODEL	YEAR	POSITION
105	<b>SA-7442</b> <b>(SA-7492)</b>	1AY1-34-300 ※ A050-34-310 ※	CAROL ※ AZ WAGON ※	AC6P ※ CY21S, CY51S, CZ21S, CZ51S ※	95- ※ 94- ※	LOW R/L (ARM ASSY)

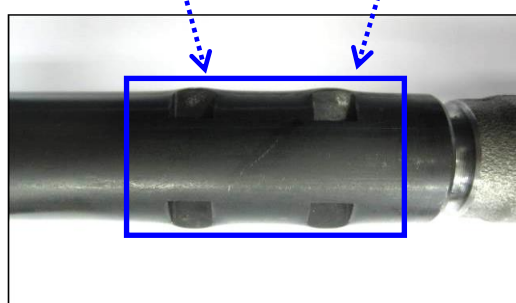
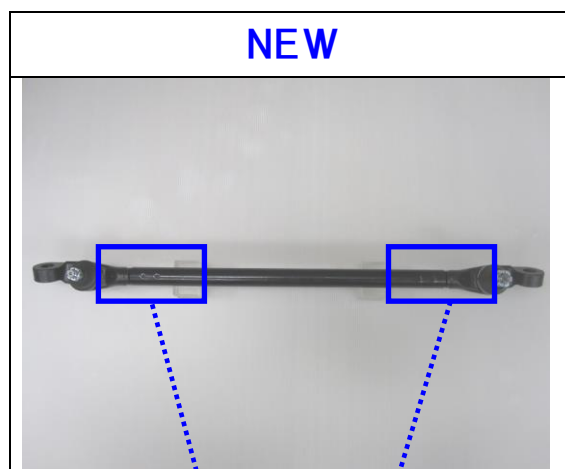
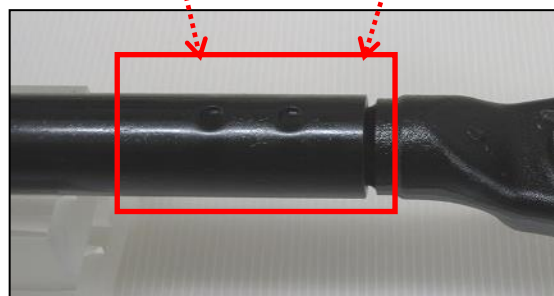
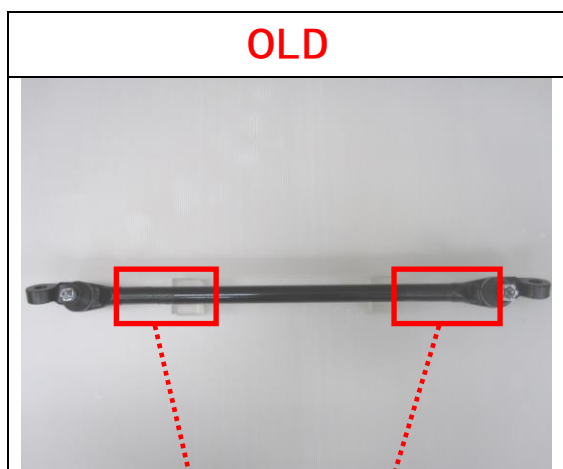
Note 1: The parts with ※ are additions.

Note 2: Additional information is not listed on the back "555" catalogues (~Vol. 15).

## Product Information①

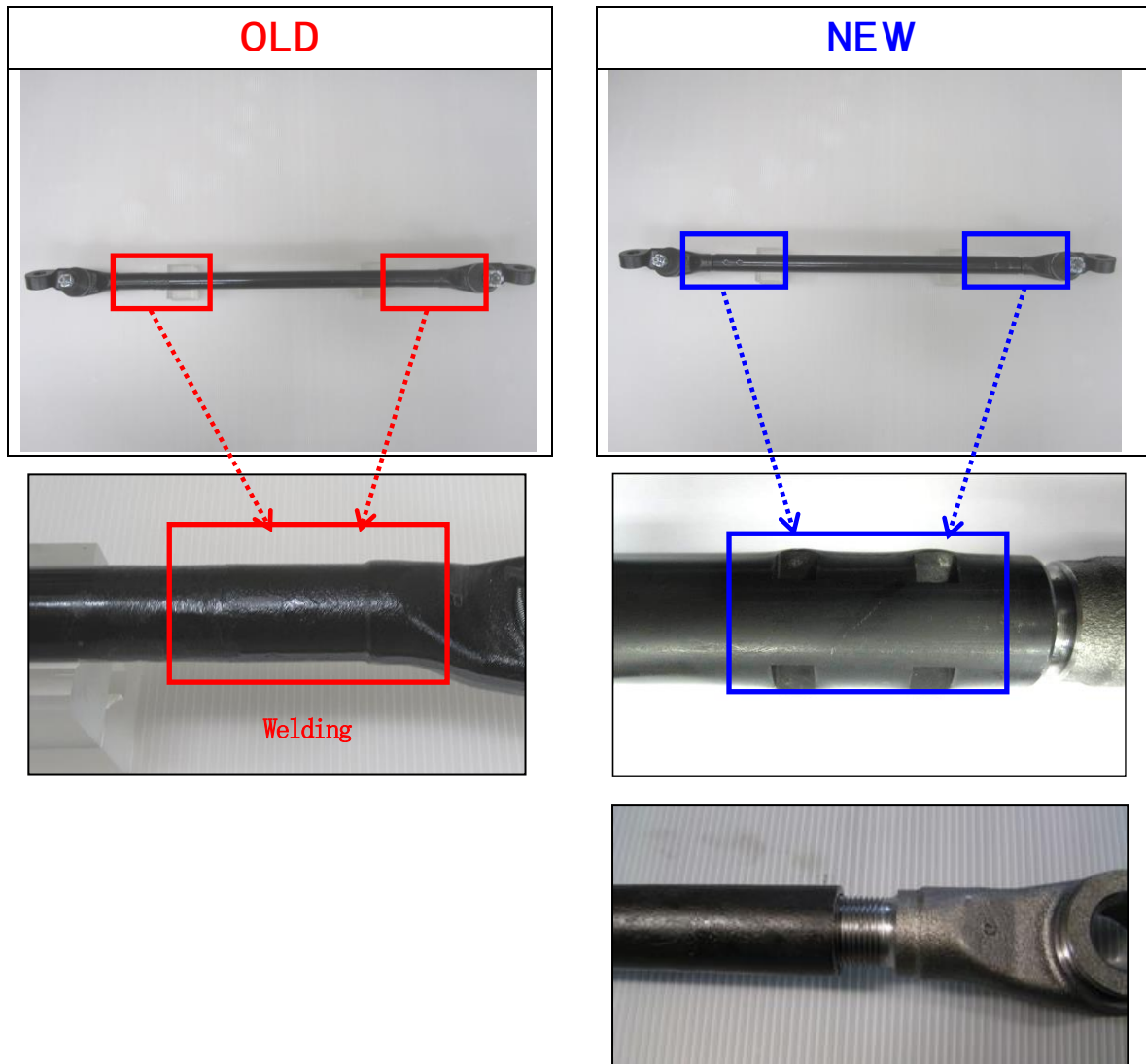
◆SC-5280 will be changed as follows.

※It will be changed immediately.



## Product Information②

- ◆SC-4675 will be changed as follows.
- ※The new shipment starts from November 1, 2014.
- ※The surface treatment is done only for center part.

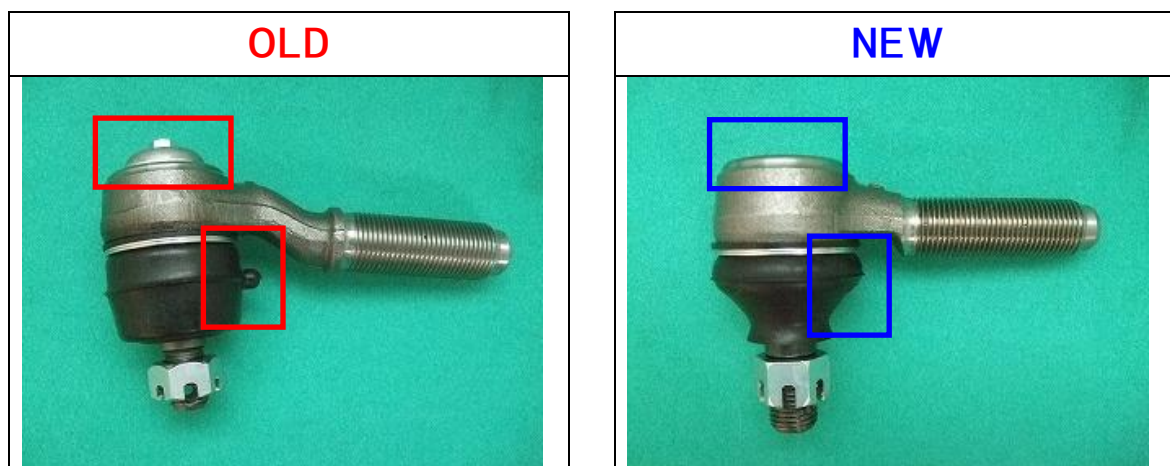


Sleeve(Tube) is joined to Socket tightly with screws and punches.

## Correction of Product Information③

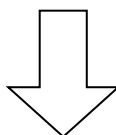
Please be informed of the following errors and corrections of NEWS No. 198 dated on October 8, 2014.

### 【 Product Information③ on NEWS No. 198 】



(WRONG)

555 No.	The new shipment starts from
<u>SB-3746R</u>	MIDDLE OF NOVEMBER
<u>SB-3746L</u>	MIDDLE OF NOVEMBER
<u>SB-3766R</u>	MIDDLE OF NOVEMBER



(CORRECT)

555 No.	The new shipment starts from
<u>SE-4671</u>	MIDDLE OF NOVEMBER
<u>SE-4672</u>	MIDDLE OF NOVEMBER
<u>SS-4670</u>	MIDDLE OF NOVEMBER

The part          is changed.